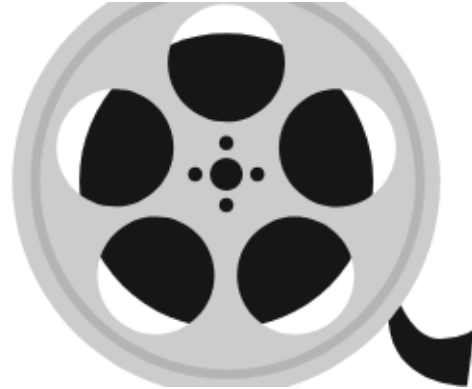


RELIGION GOES TO THE MOVIES

rel 360
spring 2019



Professor: Emily D. Crews
Office: Manly Hall 209

Email: ecrews1@ua.edu
Office Hours: Wednesdays by appt

Course Description

In this one credit hour course we will watch and discuss four films on the theme of “the real and the unreal.” These films will serve as data that allow us to consider big questions like, “How do we know what’s real and what’s not? Is there a “real” world? Is there a “real” me? What if I’m not who I or others think I am? What if the world isn’t what I or others think it is?” After each class students will submit a 250 word response paper that considers a question inspired by that week’s film.

Films

Jan 29: The Three Amigos

Feb 12: Cabin in the Woods

March 19: Memento

April 16: Pan’s Labyrinth

Prerequisites

None

Course Objectives

1. To learn to critically engage the things we consume for entertainment.
- 2: To think through the ways that art (and film in particular) allow us to understand concepts or processes like community and identity formation, agency, and classification.
- 3: To establish a repertoire of films and smart analyses about them such that all your friends are super impressed!

Course Requirements

1: Regular attendance: Because there are so few sessions of this course, students are not allowed any absences except those excused with an official doctor's note or other documentation that confirms that you are experiencing an illness, emergency, or otherwise exceptional situation.

2: Participation:

This course will be based on the seminar model. After each film we will spend an hour in discussion, and, while I may offer some introductory comments for context or consideration, most of the time will be spent in conversation. Regular participation is expected and is required to do well in the course.

3. Completion of four short papers, due the following Tuesday (one week after class) at 6pm.

Grade Scale

A+ 95-100%

A 90-94

B+ 85-89

B 80-84

C+ 75-79

C 70-74

D+ 65-69

D 60-64

D- 50-59

F below 50

Missed Exams and Coursework

You remain responsible for any assignment you fail to submit by the deadline. If there is a genuine emergency or illness that prevents you from being able to submit your paper, you must be in touch with me in advance to discuss the possibility of an extension.

Required Readings

None

Communication

Please feel free to contact me via email (ecrews1@ua.edu) or visit me during my office hours for any assistance related to the course. I will make every effort to respond to emails within 24 hours during weekdays. If you do not hear from me within 24 hours, please feel free to follow up. I rarely answer emails on the weekend except in cases of emergency.

General Comments

1. Plagiarism is a serious scholarly offence. It is using the intellectual labor of another author without proper quotation, citation, and acknowledgment. If you copy the work of someone else and say it's your own, **that is cheating.** If I suspect that a student has copied the work of another author (whether that author is a friend, classmate, internet

random, or published author), I will refer the issue to the Dean of the College of Arts and Sciences.

2. No grades of “I” (Incomplete) will be assigned in this course. Please speak with me well in advance if you are having difficulties satisfactorily completing the course’s requirements on time or if you anticipate your absence from class becoming routine and thus a problem. Although I cannot guarantee that accommodations can be made for all occasions that may arise, speaking with your professors before a problem arises will greatly enhance their ability to address the situation in a way that is both fair to your classmates and beneficial to you.

3. Students with documented physical and/or learning disabilities are advised to speak to me as soon as possible to provide copies of their documentation and to discuss the accommodation(s) that can be made to meet their needs. However, prior to contacting me, ensure that you first contact the Office of Disability Services, which is located at 133B Martha Parham Hall East. You can call them at 348-4285 or visit their web site: <http://ods.ua.edu/>.

4: UA's primary communication tool for sending out information is through its web site at www.ua.edu. In the event of an emergency, students should consult this site for further directions. In the event of an emergency, I will use your UA email address to provide additional course information.

5: Title IX protects against discrimination related to pregnancy or parental status. If you are pregnant or dealing with pregnancy-related conditions and will need accommodations for this class, please review the University’s FAQs on the UAct website (<https://www.ua.edu/campuslife/uact/information/pregnancy>) and speak to me as soon as possible.

6: Under the Guidelines for Religious Holiday Observances, students should notify the instructor in writing or via email during the first two weeks of the semester of their intention to be absent from class for religious observance. The instructor will work to provide reasonable opportunity to complete academic responsibilities as long as that does not interfere with the academic integrity of the course. Please see the full guidelines at Religious Holiday Observances Guidelines: (http://provost.ua.edu/uploads/3/9/7/6/39760652/oaa_guidelines_for_religious_holiday_observance.pdf).

7: I consider this class and our interactions in it to be part of the University’s efforts to build an inclusive and healthy environment for all members of its community. As such, I will endeavor to respect the identities and prerogatives held by all students, and to make the our class a place where each student will feel empowered to inhabit that identity. The University of Alabama is committed to providing an environment for employees, students, and campus visitors that is free from illegal harassment based on genetic or family medical history information, race, color, religion, national origin, sex, sexual orientation, gender identity, gender expression, pregnancy, age, disability, protected

veteran status, or any other legally protected basis. The University will not tolerate and will take action against individuals who retaliate against individuals who, in good faith, report violations of this policy or participate in investigations related to such policy violations.